



72 High Street P.O.Box 239 Bowraville N.S.W. 2449

E: tryan@nvlandcare.org.au / P: [02] 65647838

www.nvlandcare.org.au

SPRING 2010

FUNDING NEWS

Some funding programs have come and gone since our last newsletter, so if you are thinking of a project on your property please ring the office to be put on a notification list and to arrange a visit with Tim to scope out the project. This helps us to know which funding program your project might best fit into as the criteria can be quite specific. That way we can be well prepared for short notice. See article on page 5.



Fisheries Habitat Action Grants These grants have been provided by an allocation of funds from NSW recreational fishing fees. Applications are sought from groups, local Councils, organisations and individuals who are interested in rehabilitating fish habitats in freshwater and saltwater areas. Grants are up to \$30,000 on a \$ for \$ basis and applications close at 5pm on 15th October 2010. Previous grants have funded fish friendly projects to remove invasive vegetation and re-establish native plants on riverbanks, remove barriers to fish movement, re-snag waterways, restore natural tides to former estuarine wetlands, open floodgates and stabilize eroding river banks. For more information go to the following web address:

www.dpi.nsw.gov.au/fisheries/habitat/rehabilitating/ah-r-grants-program

Caring for our Country Community Action Grants have just closed. This funding was for community groups and NVL has applied for funding to update and reprint our very popular Nambucca Valley Vegetation & Planting Guide. The first edition was done on a very small budget, but this time we will be able to print in colour with some colour photographs of selected species. From community feedback we will include more information on what species to put where eg. riparian zones, windbreaks, under power lines, wetlands etc. In the meantime if you don't have a hard copy of the book you can find it on our website.

WORKSHOPS & EVENTS CALENDAR

Spring Tree Fair – Saturday 9th October

7.30 am to 1.30pm at Bowraville Racecourse

Free entry, food available.

Trees, shrubs, flowers, herbs, vege seedlings, bamboo, native tubestock, local produce.

Local nurseries offering some great advice.

Small Farm Management Workshop

with Carol Rose from NSW I&I (DPI)

Date: Tuesday October 26th

Time: 9.30am – 3.30pm

Where: To be held at a farm near Bowraville.

Topics covered:- Stocking rates, pasture management, soils, weeds, water needs, fencing requirements, neighbourly considerations.

Morning tea provided, bring your own lunch.

Wear appropriate shoes and bring a hat.

Ring the office 65647838 to register your place and to get directions.

Basic Animal Health

With Ian Poe from Livestock Health and Pest Authority

When: Thursday 4th November

Time: 9.30am – 2.30pm

Where: South Arm Hall

10km out South Arm Rd from Bowraville.

Ian will talk about maintaining healthy stock on your farm, nutrition, legal requirements, vaccinations etc. All animals covered.

Morning tea and lunch provided so it important to register a place. Phone 65647838 or email

tryan@nvlandcare.org.au

Nambucca Valley Landcare AGM

Will be held at the Bowraville office commencing at 5.30pm on Monday 22nd November.

All current executive positions will be vacated.

A brief general meeting will also be held.

All members are welcome.

Water Watch for Landowners

Presented by Carla Sbrocchi from NRCMA

When: Tuesday November 30th

Time: 9.30am – 3pm

Where: Bowraville

Start in hall, down to river before lunch, back to hall to have lunch and analyse results.

This is an opportunity for landowners to learn how to monitor water quality on their farms. Results can indicate the suitability of water for domestic use, stock and irrigation and is also a method to monitor water quality on their farms. Results can indicate the suitability of water for domestic use, stock and irrigation and is also a method to monitor the change in water quality as an indication of a change in management strategies.

Ring or email to find out where to meet and to register.

Morning tea provided, bring your own lunch, a hat and appropriate shoes.

INDIAN MYNA CONTROL PROJECT



Spring is here and volunteers in the valley are preparing themselves for another concerted period of Indian myna trapping. During spring and summer Indian mynas can be observed pairing off to breed. A female can lay up to five eggs in one clutch, and may even lay multiple clutches in one breeding season. This gives mynas a very big competitive advantage over our native birds.

Mynas are a major threat to biodiversity as they directly compete with our native wildlife for the already limited number of nest hollows. They have been observed evicting native birds from their nests and pecking the chicks to death. Other native animals such as sugar gliders and microbats also suffer similar treatment.

Tien Pham, our local Indian Myna Officer, has witnessed first-hand the positive results from the community's trapping efforts. "Where coordinated and concerted trapping activities have occurred we have observed native birds and wildlife returning to areas once dominated by Indian mynas. Whilst we may not be able to completely eradicate them, trapping and other control activities allow our native species to continue to thrive. The more people that get involved in trapping the greater chance our native birds and animals have for survival."

After 18 months of assisting volunteers to trap, Tien believes persistence and a coordinated approach give good results. An example of a coordinated approach is a network of Blueberry farmers north of Coffs Harbour who have assisted and supported one another in cleaning out flocks of mynas over various properties. Guardial Rai has trapped over 110 myna birds on his blueberry farm alone. In Bowraville, where there is a large resident population of Indian mynas, volunteers like Brian Grace have also been successful in keeping numbers down. Brian has been trapping continuously for the last 3 months and has trapped over 130 Indian mynas, the largest number of mynas trapped in a 3 month period. A fantastic achievement - which shows that persistence pays! Tien is seeking continued support from the community, particularly during this breeding season when the numbers of mynas can rapidly increase. Apart from trapping activities, you can help by:-

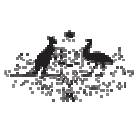
- Reporting myna sightings and the location of roost sites
- Reducing available habitat – Block holes in roofs and eaves, remove and destroy nests/ nesting material, avoid planting Cocos palms and exotic pines used as roosts
- Reducing available food – clean up any uneaten pet food, cover bins and compost piles, avoid putting out bird seed whilst mynas are present, **prevent access to poultry and stock feed on farms.**

This last point is particularly important as the large volumes of free food can support huge flocks of mynas and these flocks can cause a financial loss to farmers.

For more information or to borrow a free trap ring Tien on the Hotline 0438 218 261 or visit our website www.indianmynaproject.com.au.



Awards given to three of our fantastic volunteers



One project just finished and one starting up.

NVL and NYAMBAGA GOORI GREEN TEAM COASTAL PROTECTION PROJECT

This project has been NVL's major focus in the past year. The project focused on littoral rainforest, weeds of national significance and coastal community engagement.

The rainforest and weeds section of the project was largely directed to South Beach that has now become Gaagal Wanggaan National Park and is jointly managed by National Parks and a management committee of the Gumbaynggirr People. This was a great project that was some what complicated by the management agreement with National Parks. None the less, the project was successful and worthwhile. The Nyambaga Green Team carried out the control of bitou, lantana and other weeds that were threatening the littoral rainforest there.

The community engagement comprised a number of events. The project delivered 6 workshops and 3 field days totalling 200 people. The workshops included 2 Green Team days, 2 Dunecare days, 1 EDO workshop about vegetation and 1 on the importance of micro bats to littoral rainforest. The Gordon Park site has been added to the permanent monitoring sites for micro bats.

NVL also tried a new strategy for the Nambucca to encourage numbers of short term volunteers. The project developed simple management plans. Volunteer groups were asked to advertise work days and to provide a relaxed environment for new volunteers to participate. 3 new groups have been started and 2 schools have been involved.

The final part of the CfoC was to stabilise 3 access point across the dunes to the beach. By far the biggest project in this section was the upgrade of the Valla 4 wheel drive track. The old track followed a creek line. Some of residents wanted the track closed but it was deemed necessary for emergency vehicles and council workers. This project stabilised the track preserving the nature of the water way whilst still allowing access. The two pedestrian tracks used a new method developed in the Nambucca Shire between Geofabrics Australia and NVL. It uses bunker matting that is designed to hold sand, has next to no visual impact, is cheap to install and is an environmentally friendly material.

ENGAGING NSW COMMUNITIES in COASTLINE CONSERVATION: CARING FOR COASTLINE and ESTUARY

This project is managed by the NRCMA and NVL has secured \$50,000 for the Nambucca.

The project aims to deliver on the same targets as the one above ie. littoral rainforest, WoNS (lantana and Bitou) and coastal community engagement.

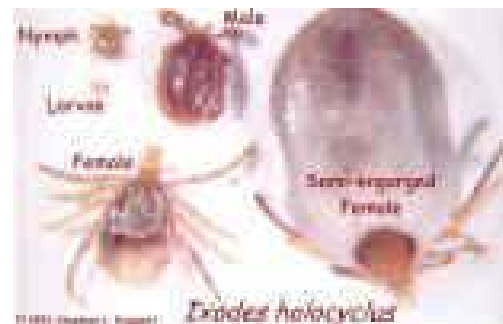
NVL is looking to enhance the littoral rainforest behind the treatment works in Nambucca and help the volunteers at Gordon Park. The WoNS (ie weeds of national significance) that threaten the integrity of the rainforest will be controlled along with any other weeds that get in our way.

The project has already helped to improve the water quality on the estuary by contributing to the stabilisation of 500m of river bank and the protection of a large wetland.

The community engagement part is still open. Any groups that would like some assistance, please let us know.

Tick season upon us soon.

The absence of multiple severe frosts this year could lead to an increase of ticks this summer. Ticks occur in moist, bushy areas and pastures where there are warm blooded animals to act as hosts. Eggs are typically laid in leaf litter or mulch then the larvae, nymphs and adults climb onto grass and the foliage of low bushes where they wait for passing hosts to feed on. Once on the host, ticks crawl upward on the host's body looking for a place to attach. Ticks are bloodsucking parasites. There are several species found here in the Nambucca including the paralysis tick *Ixodes holocyclus*.



Ticks have four distinct stages of development: egg – larva – nymph – adult. Larvae, nymphs and adult females must have a blood meal from a host. After the blood meal, larvae and nymphs drop off the host and rest in the environment as they develop into the next stage; adult females drop off the host and lay eggs.

The whole cycle usually takes about a year. Tick stages can overlap across the seasons.

While most tick bites cause little or no symptoms, they may occasionally cause allergic reactions or have toxic effects on their host.

Tick paralysis is caused by a toxin contained in the tick's saliva. Symptoms include general unsteadiness, lethargy, visual disturbances, breathing difficulties, and weakness of the arms, legs or parts of the face.

Children and pets are at greatest risk of the toxic effects, so seek medical or veterinary attention if these symptoms present. Symptoms can worsen even after the tick has been removed.

Removing a tick

Once found, ticks should be removed as soon as possible using a good pair of tweezers or fine tipped forceps. It can help to apply some oil, such as tea tree oil, first as the tick 'backs out' slightly making it easier to remove.

Press the skin down around the tick's embedded mouth part, grip the mouth part firmly then lift gently to detach the tick. Try to avoid squeezing the body of the tick during removal.

When outdoors in tick areas

- Wear appropriate clothing including long pants tucked into socks and long sleeved shirts tucked into pants.
 - Spray an insect repellent around your socks and on your clothes
 - Apply a repellent on exposed areas of skin
- You are particularly vulnerable if carrying out weed control on your property. You may get ticks at any time of the year.

Fire Weed Season

Don't forget to wear your gloves when removing fire weed by hand. The seed is transported by wind so try to get onto it before the flowers go to seed.

Camphor Laurel Control

We have a fact sheet in the office which suggests how Camphors & other fleshy-fruited weeds can be replaced by fleshy-fruited native plants as a food source for birds. The information is aimed at gardeners and land managers who have concerns over the fate of animals that now use the fruit resources of weeds.

Longleaf Willow Primrose

by Tim Woodward - Nambucca Shire Council

A new weed infestation of Longleaf Willow Primrose (*Ludwigia longifolia*) has been located in the Taylors Arm area. The infestation was introduced through the establishment of plants surrounding a man made dam system.

Longleaf Willow primrose grows up to 3 metres in height, has a shallow fibrous root system and leaves are alternate, up to 35cms long and 2.5cms wide. The plant produces a large amount minute seed (less than 1mm long), which are spread by wind, water or human activity.

Longleaf Willow Primrose is known to be established in the Great Lakes area to south of the Nambucca, with large infestations along creek systems in this Shire. Control of this invasive plant species is difficult given the proximity to water bodies, surrounding vegetation and high seed production/ storage in the soil bank. The plant can also spread through fragmentation and care must be taken when working on or around the species to prevent spread to currently un-infested areas.

Please be aware of any new species that may appear on your property, ring Tim Woodward on 0417 271 378 to report it or bring a sample into the office. Ensure that any equipment that is brought on to your properties (earthmoving, tractors, etc.) is free of weed material to prevent introduction of invasive plant species.

For more information on this species go to:

http://www.dpi.nsw.gov.au/data/assets/pdf_file/0005/144644/Longleaf-willow-primrose-weed-alert.pdf



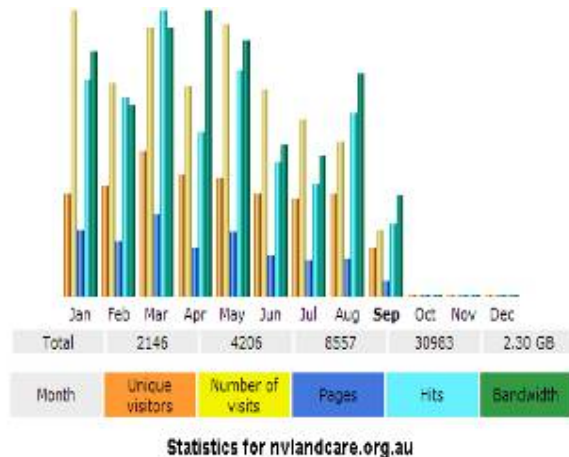
NVL Email List and Website

There is often little time from when we hear about available funding to the close of applications. This was the case with the recent Northern Rivers CMA Incentives funding (similar to the Biodiversity Program last year), where we had around 3-4 weeks. If you are thinking about seeking funding or you would like to hear of all opportunities you are better off being on our email list, as we send out information immediately we receive notification. Newsletters only go out every 2-3 months so some funding is missed. The same goes for job applications and some events.

The other benefit of email is that you get the newsletter in colour and it saves NVL money in postage and photocopying. With around 350 members this is a substantial cost.

If you don't wish to receive emails, our website is regularly updated with the latest funding and events. You could also ask us to be notified by telephone.

Website Statistics



North Coast Regional Landcare

NVL is a part of this group along with other Landcare Inc's in the region. We have just received funding from the Federal Government to employ a facilitator. The job advertisement is out now:-

Regional Landcare Facilitator – Northern Rivers Region

North Coast Regional Landcare Network Inc is a community based organisation which promotes Landcare and sustainable natural resource management in the Northern Rivers region. We are seeking to employ a highly motivated person to fulfil the new role of the Regional Landcare Facilitator.

The key roles of the position are to:

- build, support, maintain and document the capacity of community, producer and other stakeholder groups and networks in the Northern Rivers region in the fields of Landcare, sustainable agriculture and provision of ecosystem services and;
- facilitate communication and cooperation between the community, industry groups, government and other stakeholders in the field of sustainable natural resource management

The successful applicant will possess:

- Thorough knowledge and understanding of agricultural production systems, natural resource management and Landcare and an understanding of contemporary issues in these fields in the region.
- Demonstrated knowledge and experience in working with community, Landcare and production groups within the region to promote, develop and support sustainable farm and land management practices.
- Demonstrated ability to provide an effective interface between the regional NRM bodies and community, Landcare, production and other stakeholder groups.
- Demonstrated ability to promote opportunities for groups and networks to access public and private funds to address sustainable farm and land management practices which provide both private and public benefits.
- Demonstrated high level written and oral communication, facilitation, interpersonal, negotiation and computer skills and the ability and willingness to work cooperatively with diverse stakeholder groups.
- Demonstrated ability in project management, including: work plan development & prioritisation, monitoring, evaluation and reporting against work plan and project outcomes.
- Willingness and ability to participate in State and National meetings and events as required.
- Own vehicle and current drivers licence.
- Tertiary qualifications or relevant experience in natural resource management.

Location: within the Northern Rivers Catchment Management Authority region
(to be negotiated)

Employment status: part time, 28 hours per week, one year with potential extension for a further two years

Salary: up to \$64,000 (excluding superannuation) depending on qualifications and experience

For an information package please contact Craig Stehn at Coffs Harbour Regional Landcare via email chrl@westnet.com.au
Applications close at 4.00pm on Thursday September 23rd 2010.